


PRINTER COLOR & QUALITY SETUP



Access the system PrintServer and press the printer list icon  Press the 'Scan Printers' button to display the Detected Printers List window.

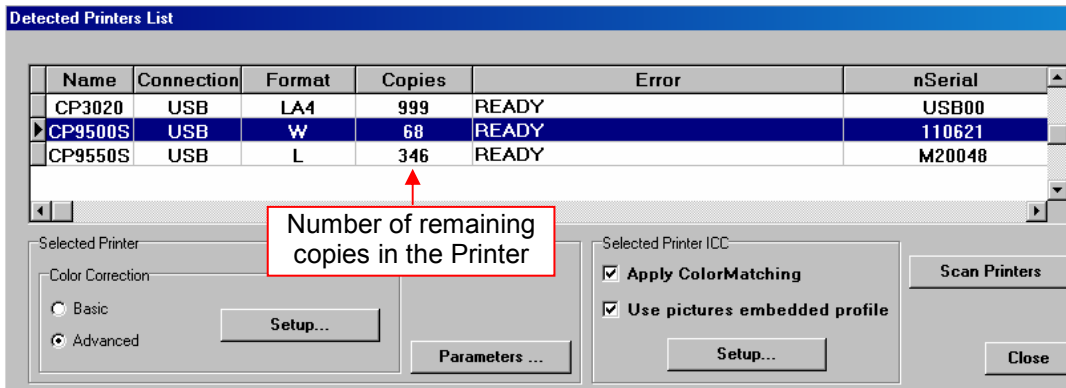


Fig. 1

After the printers are detected, the color and quality setup is needed for optimum print quality. It is possible to choose the CPD color adjustment files or the ICC profiles. You can choose to work with a different option for each printer model and size, depending on your picture quality preferences. It is very important to set up all of the parameters according to your preferences.

Current ICC profiles are created using the flat color curves of the printer, in order to start with neutral corrections. They are not based on a CPD file.

Please DO NOT MIX Printer Color curves or CPD files with ICC profiles.

As a reminder, each printing size and printing speed requires different color profiles. The CP9550DW current profiles were included in the ICC folder.

1. CP9550DW using CPD file

- 1- Check that the Color Correction group has the 'Advanced' option checked.
- 2- Press the 'Color Setup' button.
- 3- Check that the CPD default curve for the CP9550DW is loaded. You can load it by pressing on the 'load default' button, as noted in the illustration on Fig. 2. Use the gray curve as a guide if needed to make small adjustments, in order not to be so far from current standard CPD adjustment for that printer.
- 4- Press the 'Exit' button.

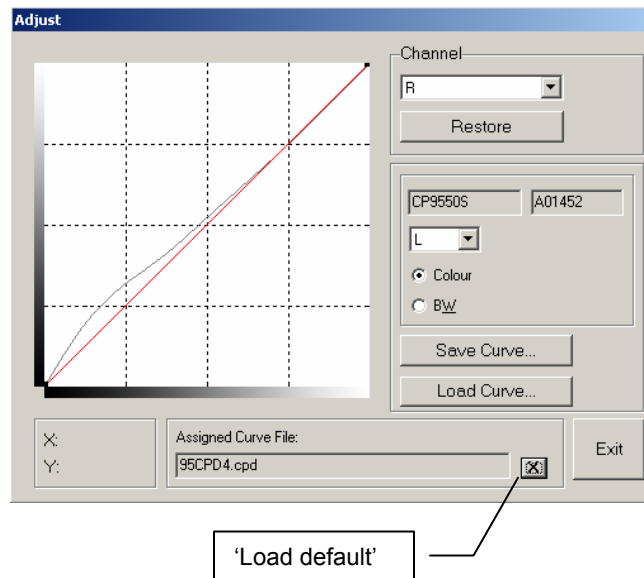


Fig. 2

5- Press the 'Parameters' button on the 'Detected Printers List' to display Fig. 3.

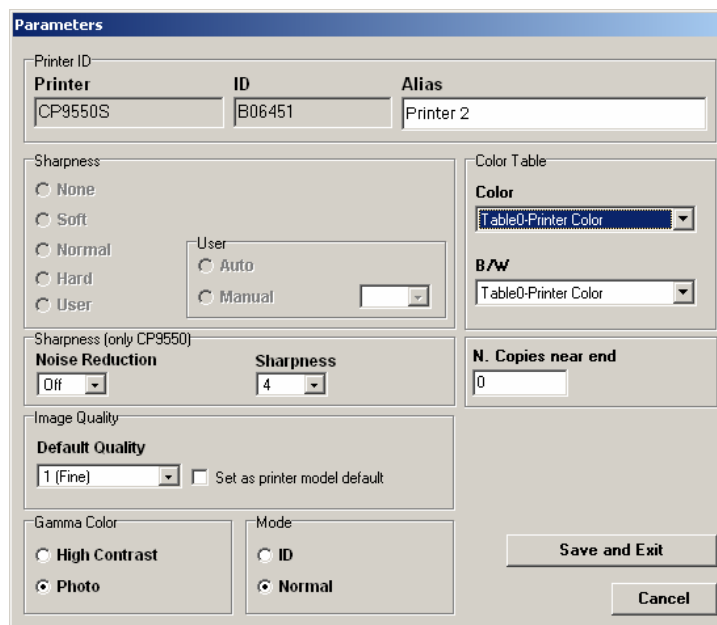


Fig. 3

- a. Please select in the 'Color Table' group, in the 'Color' drop-down list box, the '**Printer Color**' option. Do not use the 'Flat' color table.
- b. For 'B/W' drop-down list box please leave the '**Printer Color**' option selected.
- c. Set 'Noise Reduction' to 'off'.
- d. Set 'Sharpness' to 4.
- e. Set Image Quality to '1(Fine)' or set Superfine mode to OFF.
- f. Set 'Gamma Color' to 'Photo'.
- g. Set 'Mode' to 'normal'.
- h. Press 'Save and Exit'

6- To apply the color matching option the 'Apply Color Matching' panel must be **unchecked**.

7- Press 'Close' to save the setting.

2. CP9550DW using ICC profile

- 1- Check that the Color Correction group has the 'Advanced' option checked.
- 2- Press the 'Color Setup' button.
- 3- Press the '**Flat Curve or Restore**' button to reset the linear curve.
- 4- Press 'Yes' for confirmation.
- 5- Press the 'Exit' button.
- 6- Select 'Yes' to save.
- 7- Press 'Save' for filename.

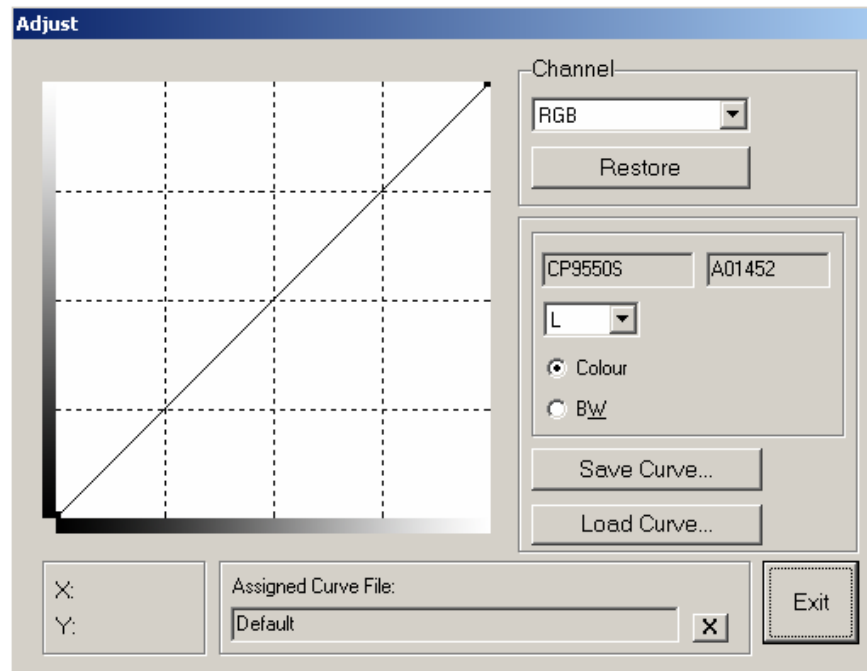


Fig. 4

- 8- Press the 'Parameters' button at the 'Detected Printer list' to display Fig. 5.
 - a. Select the 'Color Table' group, in the 'Color' drop-down list box, the '**None-Flat**' option. Do not use the 'Printer Color' color table. Full option naming convention depends on printer model.
 - b. For the 'B/W' drop-down list box, leave option unchanged (Table0-PrinterColor) unless a special B/W profile was created.

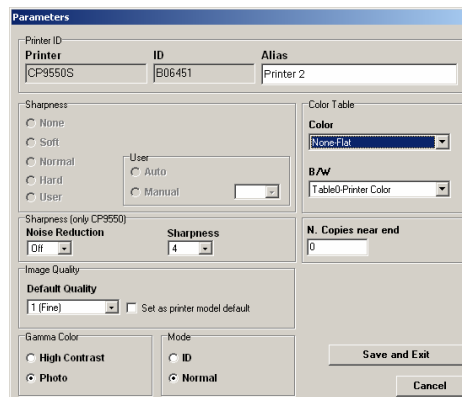
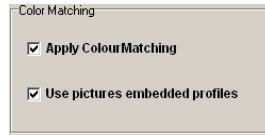


Fig. 5

- c. Set 'Noise Reduction' to 'off'.
- d. Set 'Sharpness' to 4.
- e. Set Image Quality to '1(Fine)' or set Superfine mode to OFF.
- f. Set 'Gamma Color' to 'Photo'.
- g. Set 'Mode' to 'normal'.
- h. Press 'Save and Exit'

8- Check the apply 'Color Matching' option in the 'Color Matching' panel. If you want to use the picture embedded profiles, check the 'Use pictures embedded profile'.



- 9- Press the 'ICC Settings or Setup' button on Fig. 1 to configure printer profile. On the left of Fig. 6 is the list of previously loaded profiles.
- a. Select 'Media Type' and desired Quality.
 - b. Check the 'Color' option.
 - c. Select the ICC profile from the list and press the arrow button to apply.
 - d. B/W option must remain unchecked if there is no special color profile.
 - e. Press the 'Close' button to save the settings.
 - f. Finally press the 'Close' button on the Detected Printers List on Fig. 1 to exit the PrintServer module.

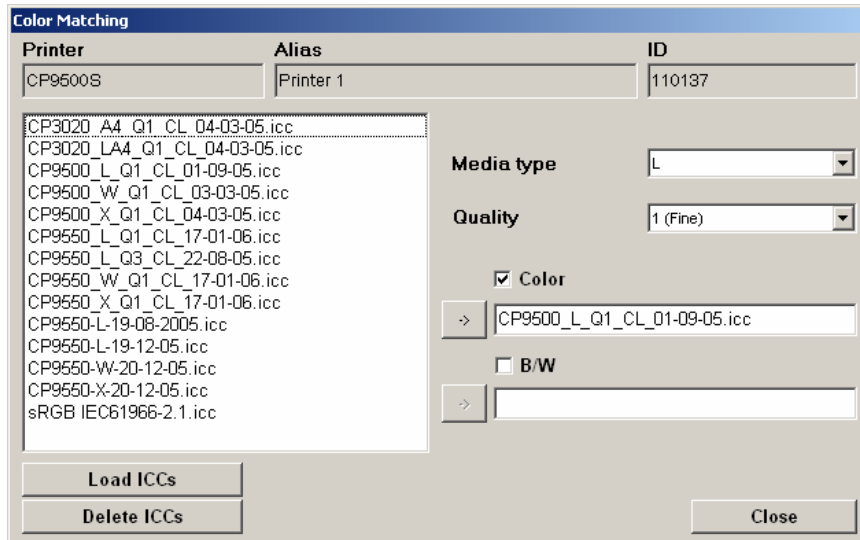


Fig. 6